

**Blue silk tweed  
cardigan  
McCall's 4391**

This pattern is the same as the one Pati used for Ethel's tan suit (page 24). It's a simple-to-sew jacket once the bust alterations have been done!!

The pattern was designed for fringe, but I decided to make a detachable version. This fringe is two layers of 1½"-wide bias from the tweed. I sewed them together thru the center, then added a narrow velvet ribbon. I pulled the "fringe" thru my hands to rough it up, then hand basted it to the jacket.



*Fringe*



# Embroidery TECHNIQUES



## **Brown linen jacket with brown embroidery McCall's 4930**

This is a great new Palmer/Pletsch pattern, a blazer style jacket with a TAB collar. The linen has PerfectFuse TailorUltra in the front and undercollar, PerfectFuse Light in all the other pieces except the sleeves. The embroidery was stitched to the right front, back and sleeve before they were sewn together. It is a simple feather detail from a Inspira design from Husqvarna Viking called Summer Garden; the feathers are #19 and #20. The embroidery is not easy to see, but I wanted a subtle look.



**McCall's M4785 Blouse**

SEWING  
WITH *Marta*

**Wine/black silk tweed Jeans style jacket with embroidery – Vogue 2793**

Palmer/Pletsch will have a jeans style jacket later this year. This one is without the band on the pattern and lengthened a bit. I used PerfectFuse Light everywhere but the sleeves. The embroidery is from Husqvarna Viking Mega Flowers, card 139, design #1. I wanted to have an outline look, so I skipped the background colors (color #1, 2, 8, and 15); the other colors were done in black only. I stitched the whole design on the back after the yoke was sewn to the lower back sections. For the right front I embroidered the first 2/3 of the design after the front yoke was sewn to the lower front. Then I used an E Z Glitzer to apply the black and red “bling.”



# PerfectFuse™ the User-Friendly Interfacings



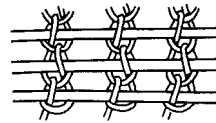
*New!*  
**PerfectFuse™  
TAILOR Ultra**

*This weft interfacing has the hand of cashmere with a little gentle give in the crosswise direction making it soft and pliable.*

A wonderful new quality product has replaced the original PerfectFuse Tailor. The new product, **PerfectFuse™ TailorUltra**, is the premium one used in very pricey ready-to-wear. It is 66"-wide, has crosswise stretch (ideal for stretch-wovens), and has enough body to turn silk crepe de chine into a jacket while retaining softness!

In 2000, Palmer/Pletsch introduced a new line of fusible interfacings that can be used to give added body to garments when sewing. Fusibles were first developed in 1968, at the time Pati Palmer was an educator for the Armo Interfacing Company. Pati called the first fusibles bake-ons. "You'd iron them on and then they'd bubble and fall off," says Palmer. Over the years they improved dramatically and fusing agents were applied to woven fabrics, non-woven fabrics, and knits. The latest and best for general use are the new weft interfacings. These are fabrics

that are knitted with the addition of a yarn woven into them along the crosswise or "weft" direction. They have the softness of a knit, yet the stability of a woven.



In 1989, Pati, in keeping up her contacts with Armo, a division of Crown Textiles, developed a line of interfacings for The McCall Pattern Company in Australia. The line became very successful. At that time, there was no need for her to do this in the U.S. Then, in 1995, Crown Textiles, the premier interfacing manufacturer in the U.S., filed Chapter 11 and was sold. Confusion followed. Pati got together with longtime associate and sewing expert, Marta Alto, and began to research for interfacings that would meet their goals. The goals and how they solved them with their new line of **PerfectFuse** interfacings are as follows:

- ◆ **Simplification.** There are so many interfacing choices that sewers have no idea what to use where. Therefore, we've narrowed the choices to four that will solve nearly every interfacing need.
- ◆ **See the difference.** Often, you can't tell the difference visually between one interfacing and another. Pati and Marta made sure there is a distinct visual difference between each interfacing in their line. Even the names signify the differences—PerfectFuse Sheer, Light, Medium, and TailorUltra.

- ◆ **Good performance.** Some interfacings bubble during laundering or abrade and pill. All of the new interfacings are wefts which do not pill or shred after several launderings. They add stability as well as softness. In-depth care and preshrinking instructions are given for each weight.
- ◆ **Wider widths.** Some garments have required narrow interfacing products to be pieced. Our new interfacings are 60 and 66 inches wide, TWICE the width of most other interfacings which are 22" or 29."
- ◆ **Good instructions.** Generic instructions, if any, are sold with interfacings today. Each of the new interfacings has its own instructions. In addition, each package includes well-researched and well-written general instructions for using fusibles.
- ◆ **Instant, no-wait purchasing.** When you go to the deli and have the choice of waiting for your cheese to be cut or to pick up a package of the same cheese, time will be a factor in your choice. Pre-packaged interfacings mean you don't have to wait for them to be cut. PerfectFuse interfacings come in one- or three-yard packages. One yard of the wider width is plenty for most projects and you can store the unused portions in the plastic envelope. One yard of TailorUltra will do two jackets, depending on size and style. One yard of Sheer will be enough for several shirts.
- ◆ **Less confusion in your interfacing stash at home.** Often, after we use an interfacing, we stack it on the shelf and three months later we can't figure out what it is. The protective storage bag will keep the interfacing clean and the consumer will always know which interfacing is inside.
- ◆ **Quality.** Sewers aren't very confident in how interfacings will perform. Marta Alto and Pati Palmer tested hundreds of products over a four-year period and spent two years writing, editing, and testing use and care instructions. Palmer/Pletsch is a name recognized for quality.
- ◆ **Reasonable prices.** Interfacings prices vary greatly. Often you get what you pay for. The team went for the best product, not the best price, yet the new line is reasonably priced and double the width of other products. Based on the wider width, the interfacings are generally less per yard than competitor's narrower products.

**A new video called *Perfect Fusing, The Latest Solutions to Professional Garment Shaping* is now available.**

In it, Marta Alto discusses different interfacings and their uses, including other brands than PerfectFuse. She also talks about the different uses for the Perfect Fuse brand which includes PerfectFuse Sheer, PerfectFuse Light, PerfectFuse Medium, and PerfectFuse Tailor. For example, Sheer and Light are similar in weight, so what are the different uses? Sheer provides crisper body.

Use it in collars and cuffs. On some smooth fabrics, Light may show through, whereas Sheer won't. However, Light fuses to textures better than Sheer. Designers use Light as an underlining in 3-ply silk crepe de chine jackets. It makes a great underlining in any jacket where a little extra body is needed. Its open weave adds breathability. Keep Light in the bag as it can snag – another reason we sell it in a package. TailorUltra is wonderful in jacket fronts and on the undercollar combined with Medium or Light on the upper collar and facing. Medium is ideal for Ultrasuede jackets.

The video also covers preshrinking, cutting, proper fusing, and garment care. Marta takes you through the entire process including showing many different types of garments and explaining what she used and why. She has lots of time-saving tips and advice for quality sewing.

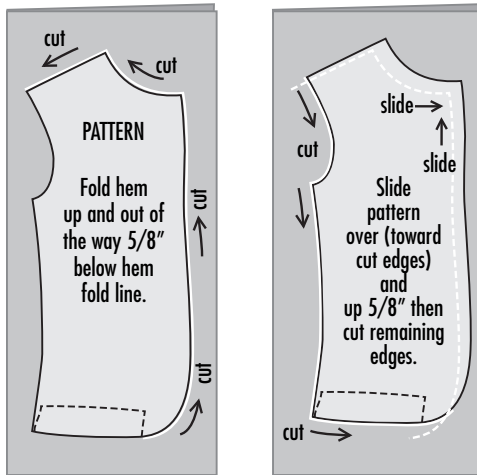


**Background:**

*Pati Palmer's first job out of college was with Crown Textiles, one of the largest U.S. interfacing manufacturers. She tested the first fusible interfacing for them and has been on the leading edge ever since. Marta Alto has been using, testing, and teaching about fusible interfacings for 30 years. As a team, they saw a need and spent 4 years developing interfacings for their new line of PerfectFuse interfacings.*

Each package of **PerfectFuse** includes how-to instructions on the back of the package insert.

**QUICK TIP:**  
**How to Cut Interfacing Smaller** than the garment piece, not to eliminate bulk, but to protect your ironing surface.



Cut the front, neckline, and shoulder, then slide the pattern toward the cut edges, 5/8" over and up. Cut side and bottom.



## How to Use PerfectFuse™ TAILORUltra

### MAKE A TEST SAMPLE

- ◆ Always make an 8"-square test sample. Does the interfacing adhere well? Does the outside of the fabric look good? Do you like the amount of body added? (Feel with all layers that will be used together.) For extra body, interfacings can be layered (fuse one on top of another). For washables, "face" the sample by stitching fashion fabric over the top, then wash as you plan to wash the garment. How did the sample launder?
- ◆ Use ecru-white when possible. It's easier to see the markings you've transferred from the pattern.

### BEFORE FUSING

- ◆ **ACCURACY-** ALWAYS place your fabric wrong side up on a pressing surface. Put your pattern piece on top to check for distortion. Adjust the fabric to match the tissue. Now you are ready to fuse interfacing to your fabric.

### PRESHRINKING

- ◆ Preshrink by soaking in hot water for 10 minutes. Blot in a towel (don't wring). Hang over a towel rack to dry. These interfacings dryclean well. However, if you want to wash the finished garment, make a TEST sample to make sure you like the results. If you get minor puckers, they will generally press out. Use a gentle cycle and hangar dry or carefully dry on low in a dryer. Overdrying can cause pilling, puckering, and a worn out look.

### FUSING SURFACE

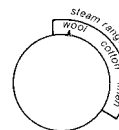
- ◆ Do not use a Teflon-coated ironing board cover. It causes shine and overheating and does not allow steam to penetrate when fusing. Cotton covers are best.
- ◆ A large surface is best for fusing. Our favorite? Make a CUT 'N' PRESS BOARD using wood covered with cotton or wool padding and then wrapped with muslin stapled to the under side. (Our books on sewing room design and on pant fitting show how to make one.)

### IRON and TEMPERATURE

- ◆ A "shot-of-steam" type iron is best. You get more steam.
- ◆ Always set the iron at the wool steam setting. You may set it at a higher temperature if your fabric is heavy and can take higher heat. TEST FIRST!!

### TIME

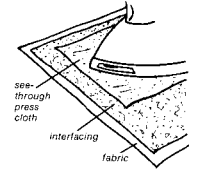
- ◆ The heavier the interfacing and the fashion fab-



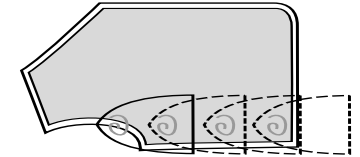
ric, the more time it will take to get a good fuse. Use continuous steam. If it is not fusing well, cover with a damp press cloth and try again. TEST FIRST!

### FUSING

- ◆ Place fabric wrong side up. Press fabric to eliminate wrinkles. Place interfacing fusible (rough) side down. Smooth it in place without stretching it.
- ◆ Cover SHEER and LIGHT with a see-through cotton press cloth to protect your iron. A press cloth is optional on the rayon content interfacings (MEDIUM and TAILOR).



- ◆ Be sure to lap iron positions as you fuse. Marta calls this "zonal fusing." Fusing the entire time in one place could leave an iron imprint. Fuse by lapping iron 5-15 seconds in each spot. If iron only has holes in front of soleplate, be sure steam holes touch all areas of the interfacing. As you move the iron forward, the back of the iron will dry the fabric and continue to fuse the interfacing.



- ◆ For heavier fabrics, you may need to also fuse again from the right side. For example, if you are fusing TAILOR to a wool tweed, turn the fused fabric to the right side. Using a dry press cloth, fuse again. Some fabrics resist fusing like rainwear fabrics or those with silicon. Use a sew-in on fabrics such as velvet and seersucker.

### AFTER FUSING

- ◆ **Add Markings:** Place pattern tissue back onto the fused fabric to mark darts, roll lines, buttonholes, and pockets. Also, you can check to see if any shrinkage occurred during fusing so you can compensate when sewing. Remark seamlines and hemlines if the fabric has shrunk.

**Refer to the Palmer/Pletsch book, *Jackets for Real People*, for more how-tos.**

*Have you made a  
garment you think would fit in*

**FASHION** for  
*Real* **PEOPLE?**

We love to see what you're doing, and, when possible, include your projects in this publication. Send Pati photos along with a description of your garment and any special sewing techniques.

Send an e-mail to [patipalmer@aol.com](mailto:patipalmer@aol.com)

*Love to sew?  
You deserve a Sewing Vacation  
in beautiful Portland, Oregon!*

- **4-DAY AND 5-DAY WORKSHOPS**
- \* **OPTIONAL PROGRAMS**
- \* **SHOPPING TOURS**
- \* **TEACHER TRAINING**
- \* **IMAGE MAKE-OVERS**

See the next page for our 2006-2007 schedule or visit

**[www.palmerpletsch.com](http://www.palmerpletsch.com)**

for complete details.

## 2006/2007 Workshop Topics & Dates

### FOUR-DAY WORKSHOPS

#### Beginning Sewing Teacher Training

Learn to teach sewing to  
teens or adults.

June 23-26, 2006

October 6-9, 2006

August 1-4, 2007

#### Beginning Quilting Teacher Training

Learn to teach several  
quilting techniques

August 11-14, 2006

August 6-9, 2007

#### Sewing Camp

Work on any project or finish with  
help from the experts

August 3-7, 2006

July 26-30, 2007

#### Embroidery Camp

Really play with the embroidery  
machines. Work on your skills.  
dates tbd

#### Fit

Learn how you vary from the patterns.  
Alter as many as four patterns of your  
choice.

July 7-10, 2006

November 10-13, 2006

July 20-23, 2007

November 9-12, 2007

#### Pant Fitting & Sewing

You will sew a fitted pant  
and a trouser.

July 21-24, 2006

November 3-6, 2006

June 27-30, 2007

### FIVE-DAY WORKSHOPS

#### Couture

Really refine your sewing skills!

July 28-August 1, 2006

July 12-16, 2007

#### Tailoring

Sew a jacket, including welt pockets  
and perfect set-in sleeves.

July 13-17, 2006

November 16-19, 2007

### PRICES

**4-day Workshops** \$650/\$595\*

**5-day Workshops** \$750/\$695\*

\*if paid in full 60 days before the workshop.

A \$100 deposit will reserve a space at the higher rate.

#### Optional Programs:

3-Day Teacher Training for Fit and Pant: \$395

Teacher Training for Beginning Sewing and

Beginning Quilting—included in price

1-Day Teacher Training for Serger: \$295

1-Day Teacher Training for Tailoring: \$195

Fabric Store Tour: \$55

Maryhill Museum/Théâtre de la Mode Tour: \$75

Image Make-Over/Photo Day: \$85

for Color Analysis & Make-up Lesson contact

Ethel Harms directly at 503-665-5318

### FOR MORE INFORMATION & TO REGISTER

Visit [www.palmerpletsch.com](http://www.palmerpletsch.com) to  
register, or print out our registration form and fax to  
503-274-1377 or mail with a check or credit card  
number to 1801 N.W. Upshur St. Suite 100,  
Portland, OR 97209

Or call Marta Alto, Workshop Coordinator,  
at 503-297-1519

Take A Sewing  
Vacation!

IN BEAUTIFUL  
PORTLAND, OREGON

### WHAT YOU'LL NEED TO KNOW

**WORKSHOP LOCATION** — Our 3,000 square foot classroom is in the  
**Fabric Depot**, a wonderful fabric store! They offer you a discount, allow you to  
run a "tab" which means no waiting in lines for purchases, and they will ship  
home your purchase. (Some attendees ship their laundry and pack their fabrics!)

**HOTEL** — The Monarch Hotel provides airport transportation, transportation to  
and from the workshop, and is close to restaurants and shopping. Call 1-800-  
492-8700 to make your reservations. Be sure to ask for the special  
**Palmer/Pletsch Rate**.

**LUNCHES** — included

**DINNERS** — a **graduation dinner** is held the last day of class. All other  
dinners are on your own. There is every type of restaurant close to the hotel. Also,  
if you want to sew after class at night, there are several restaurants near Fabric  
Depot.

**BRING LIST** — After you register, we will send you a list of what to bring. If  
you have the Palmer/Pletsch book that could be used as a reference for the work-  
shop, do bring it. We recommend the spiral version, and Fabric Depot does carry  
them.

*"I've been sewing for almost 50 years and have attended  
many courses in the U.S., London, and Paris, but this  
workshop was by far the most valuable for solving a  
personal fit problem."*

Pat Christensen, Poulsbo, WA  
Pant Fitting & Sewing Workshop attendee