

FASHION for
Real PEOPLE
WINTER
2004/2005

*Feminine, Elegant Style
with a Vintage Edge*

from
Palmer Pletsch



The Look

Feminine, Elegant Style with a Vintage Edge.

WHAT'S HOT NOW:

Fur
Cardigan Sweaters
Ladylike Coats
Brooches
Tweed
Feminine Blouses
Vintage Glamour
Jackets
Soft Skirts
Pencil Skirts
Tailored Suits
Ponchos & Capelets
Beaded & Jeweled Embellishments



Look for a new confidence in combining menswear tailoring with feminine softness, retro design, luxurious details, and a mix of fabrics with highly sophisticated color combinations. Glamour and glitz light up the night!

“MUST HAVE” ACCESSORIES

Round Toed Pumps

Ribbon & Bow Belts

Clusters of Brooches

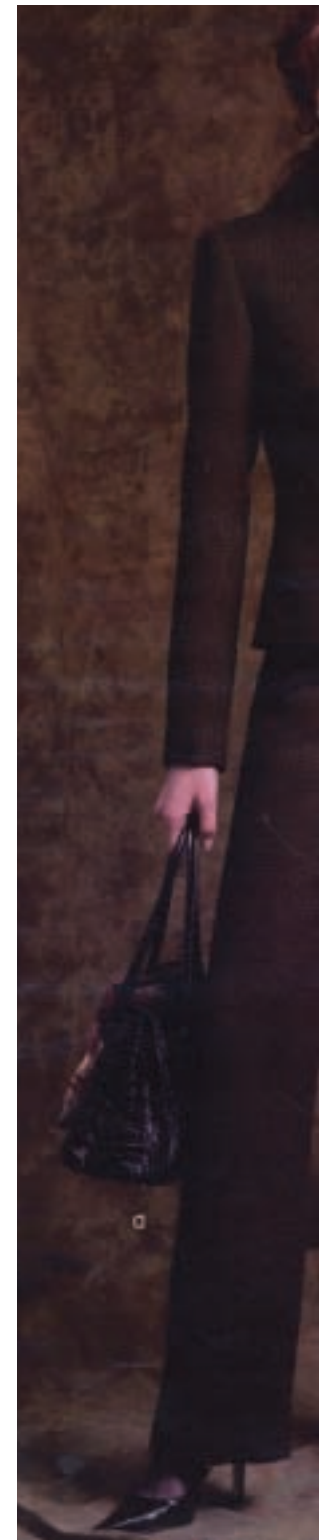
Fur Scarves

Structured Handbags

Cocktail Rings

Pearls

Colored Reptile Shoes, Belts & Handbags





THE FABRICS:

Rich textures - fur, velvet, cashmere, leather, suede, corduroy and wool jersey.

Opulence - silk, satin, brocade, tapestry and woolens woven with metallic threads.

Menswear suiting - tweed, pinstripes, herringbone, glen plaids and tartan plaid.

Femininity - lace, chiffon and lamé.

The Trims:

Luxurious embellishments of beading, sequins, fur, embroidery and jewels are found on necklines, collars and cuffs, front closures, hemlines, handbags, belts and shoes.

THE PRINTS...

leopard, tiger and zebra prints, especially printed on fur, add a touch of vintage glamour to your wardrobe. '40s inspired floral prints lend themselves to soft skirts and flirty dresses.



EDITORS' CHOICE: FIGURE TYPE SELECTIONS

In the pages ahead we've chosen new designs from Vogue, Butterick and McCall's pattern books to compliment and camouflage each figure type.

Try our suggestions from each season's color palette, applying the coordinating fabric ideas that suit your own personal coloring to the pattern that suits your figure type.

Our wardrobe selections are from
McCall's, Vogue & Butterick
pattern books.

Simply refer to our figure type symbols
for your guide to your best
winter fashion.

LOOK FOR THESE SYMBOLS:



Your weight is evenly distributed on top and bottom **with some or a definite waistline.**

Your weight is evenly distributed **with little or no waistline.**

Your weight is carried in your upper body. You have broad shoulders and may have a large bust. Your hips are narrow.

Your body is larger below the waist. You are smaller on top and may have a small bust line and small waistline.

You carry most of your weight in the middle of your body. Your waist is larger than your bust or hips.

EDITORS' CHOICE

WINTER'S "MOST WEARABLE" CAPSULE WARDROBE



McCall's M4657


Palmer/Pletsch Classic Fit – The Perfect Coordinate Lined Jacket, Pants & Skirt.


Sizes 8-22


Tailored suits are a fashion favorite for Winter and Holiday. Our "Most Wearable" coordinates are perfect for a smart daytime suit or smashing evening suit.


With vertical design lines in the jacket, that can be semi-fitted to accentuate the curve of a waistline or be straightened to skim over the body, we feel this is "The Suit" of the season!


Look for a lightweight wool crepe or wool gabardine for daytime. Choose an opulent brocade or tapestry for evening.

 This pattern has fitting lines that enhance your trim waistline.

 Skim the body or add shape with the vertical fitting lines of this jacket.

 Add shoulder pads to the jacket to balance the width of your hip line. The jacket length should cover the widest part of your hips..

 The deep, V neckline & vertical design lines add length & slim your upper torso. Taper the hemline of the jacket and skirt to enhance the slimness of your lower body.

 The vertical design lines of the jacket create visual length & a slimming effect to your middle body. Straighten the seams to skim the body so the jacket won't be tight.



THE PERFECT HOLIDAY SUIT & DRESS



McCall's 4232
Palmer/Pletsch Jacket, Skirt, Pants, and Dress
Sizes 8-22

We introduced this Palmer/Pletsch suit pattern in our Spring/Summer 2004 issue. Because it is so perfect for the holidays, we want to show it again.

There is nothing like the festive look of a red dress or suit for holiday parties. Try yours in a light-weight wool crepe or gabardine.

The look of white or off white at Christmas time is always a stand-out. Try it in wool crepe with a white-on-white embroidered lapel.

The sophistication of a black dress with a black satin lapel gives femininity to the look of a tuxedo.

The pattern includes alteration lines printed on the tissue. It is shaped in at the waistline but, if you are thick through the middle, just let out the seams.

Pati uses PerfectFuse Light on all jacket pieces except the sleeves.



EDITORS'
CHOICE
FOR

Elegant
EVENINGS

⁶ *Still looking for the perfect thing to wear to this season's holiday events? Here's an elegant solution.*

EDITORS' CHOICE FOR Gala EVENINGS

We featured this pattern as part of Spring's "Most Wearable Wardrobe." This time of year, choose an evening fabric such as satin, silk or brocade for the coat, choose a matching or complimentary fabric for the dress or pant and top. Add dangle earrings, feminine slides and a gold evening bag.

Pati's top and duster are from a flocked pink polyester taffeta and the pants from a solid coordinate. Accessories include chandelier earrings and closed-toe mules with a short heel. Both dusters were totally fused with PerfectFuse Light to turn a lightweight fabric into a coating weight.



Pati uses teal silk shantung over black top and pants. The oblong scarf adds interest.

McCall's 4394



Three Palmer/Pletsch teachers agree that this is

THE SEASON OF STATEMENT JACKETS.

Left to right: Lynne Weddell, Vacaville, CA; Alice Lorenzen, Indianapolis, IN; Nancy Seifert, Isaquah, WA



THE PERFECT FITTING JACKET

McCall's M4598
Palmer/Pletsch Classic Fit
Sizes 8-24

Just in time for this season of "Statement Jackets" the new Palmer/Pletsch Perfect Fitting Jacket will be a pivotal piece in your wardrobe.

Choose a menswear fabric such as, tweed, tartan plaid, herringbone or a pinstripe. Embellish the tweed with an exquisite embroidery pattern or stud the fabric with jewels. Pair the tartan plaid with denim jeans, the herringbone or pinstripe with a soft silk charmeuse or chiffon skirt.

Try a rich texture like velvet, suede, leather or corduroy. Mix the velvet jacket with a soft suede skirt and feminine blouse.

Add satin lapels to a velvet jacket and add a matching pant for an evening tuxedo look. Combine a leather or corduroy jacket with wool plaid trousers or short pleated skirt.

It's all about how you mix your fabrics, textures, colors and your creative embellishments!



WINTER 2004/2005 PATTERN PICKS.....

 *hourglass*



Vogue V7947



McCall's M4601

 *rectangle*



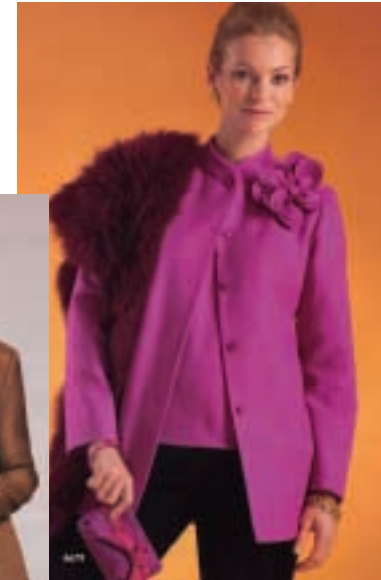
Vogue 2770

Vogue 2756



triangle

 *the "O" shape*



McCall's M4656

inverted triangle



WINTER 2004/2005 PATTERN PICKS: *hourglass*

Your goal in dressing your balanced figure is to choose a pattern with design lines that skim the contours of your body and accentuate the curve of your waistline.

Pattern Pick:

Vogue V7947 Jacket, Top, Dress, Skirt and Pants.
Sizes 6-22

This five-piece wardrobe is perfect for someone with an hourglass figure type.

Choose a lightweight wool crepe or gabardine, a subtle menswear plaid or lightweight tweed for day. Add a matching skirt or try one in silk charmeuse for a mix of feminine and masculine.

The fitted dress would be fabulous with embroidery, studded jewels or beading at the neckline and topped with a matching or accent colored jacket.

Also suitable for:

- ▲ The soft A-Line skirt skims over and camouflages your hips. Choose a darker or more subdued colored skirt or pant when wearing a shorter jacket. Add shoulder pads to the jacket to balance the width of your hips.



Your goal in dressing your angular body shape is to enhance it with straight and semi-fitted design lines. A semi-fitted shape will add the illusion of waist definition.

rectangle

Pattern Pick:

Vogue 2770 Jacket, Top, Skirt and Pants
Sizes 8-24

We love this 4-piece wardrobe! The look is great for both Winter and Holiday. The vertical design lines are semi-fitted to add some curve to the waistline. Choose lightweight woolens or wool crepe for the jacket, skirt and pant. Use wool crepe, silk, silk charmeuse, silk satin or brocade for the top.

The below-the-calf pencil skirt adds a look of sophistication. Top it with a cardigan sweater set, add a rhinestone brooch and round-toed pumps for a fashion forward look.

Try a brocade pant and top for the holidays. Top this look with a fur jacket or capelet.

Also suitable for:

- ✘ A good selection of pieces to enhance your figure type.
- ▽ The pencil skirt enhances your slim lower body. Taper the hems of the skirt and jacket. The sleeveless top gives the illusion of a narrow shoulder line, and diminishes the size of the upper body, especially when it is in a darker color.
- ▲ The longer pencil skirt adds visual length and slims your lower body. The jacket should finish at a point lower than the fullest part of your hips.



Vogue
V2770



inverted triangle



Your goal in dressing is to diminish the width and size of your upper body and enhance the slimness of your lower body.



Pattern Pick:

McCall's M4601 Long Jacket,
Bias Vest, Skirt and Pants.
Sizes 6-20

A great look for Winter, this long jacket has vertical design lines that create the illusion of shape and set-in sleeves that visually narrow the shoulders. The vest diminishes the size of the bust when it is in a darker, more subdued color. When worn sleeveless or over a light colored shirt, the vest creates the illusion of a smaller, narrower upper torso.

The knee length skirt shows your thin legs. Taper the hem of the skirt and the jacket to enhance the slimness of your lower body. An open collared shirt or V-neck top will slim your upper body.

Choose a lightweight wool or wool crepe. We love the slimming look of pinstripes.





Your goal in dressing is to balance your body shape with design lines that visually add width to your shoulders and diminish or camouflage the size of your hips. You will appear slimmer if you choose fitted or semi-fitted styles that accentuate the curve of your waistline.

triangle

Pattern Pick:

Vogue 2756 Jacket, Top, Dress, Skirt and Pants
Sizes 8-24

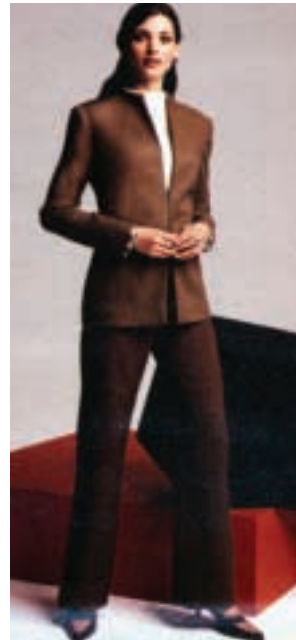
This semi-fitted jacket has shoulder pads to widen the look of your shoulders and shaping to enhance your waistline. The length will easily cover the widest point of your hipline. The soft A-line skirt skims over and camouflages a full hipline. The fitted top, in a lighter, brighter color will add volume to your upper body especially if you use shoulder pads. The fitted dress will work with shoulder pads added to balance the width of your hips.

Choose soft, drapable fabrics for the jacket, skirt and pants. Use a wool jersey knit for the dress and top. Add a feminine blouse and a fur scarf to the look.

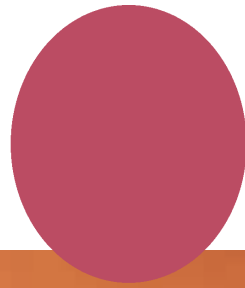
Also suitable for:



A great selection of pieces to enhance your proportions.



the "O" shape



Your goal in dressing your body shape is to create the illusion of a waistline and choose vertical design lines that lengthen and slim your torso.


Pattern Pick:

McCall's M4656 Coat, Jacket, Top, Pant, Skirt and Flower
Sizes 8-22

The outside lines of these slimming pieces have a straight design lines that will skim over the body nicely. We love the added touch of the flower, a fun accessory for your new wardrobe. Matching the top to the skirt and pants will create the illusion of length and slim the middle body. Choose a darker, more subdued color to diminish the size of the torso.

Look for soft fabrics, that drape well. Avoid anything that is stiff

Also suitable for:

 A good selection of pieces that will enhance your angular body shape.

