

Palmer Pletsch

60" wide
64% Rayon/36% Polyester Weft

WIDER WIDTH FUSIBLE WEFT INTERFACING THAT WORKS!

PerfectFuse™ MEDIUM

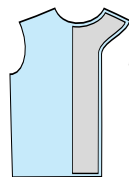
Great for dresses, blouses & jackets where a little more body is needed.

- ◆ Most often used on upper collar and facing of unlined jackets.
- ◆ Excellent on facings and collars of sweater knits.
- ◆ Wider width allows fusing to large pieces without piecing.
- ◆ Great on Ultrasuede® fabrics.
- ◆ Washable and dry cleanable. See instructions on back.
- ◆ The high rayon content is for softness.
- ◆ Available in ecru-white and charcoal-black.



www.palmerpletsch.com

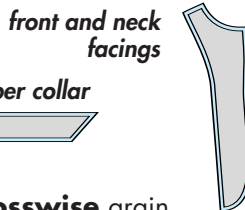
MAIN USES FOR PerfectFuse MEDIUM



jacket
front
facings
on some
fabrics



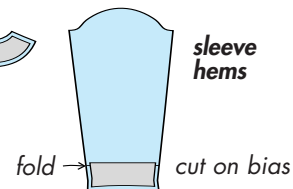
upper collar



front and neck
facings



sleeve
hems



fold

cut on bias

NOTE: The heavier lines in the interfacing are the **crosswise** grain.
The lengthwise grain printed on the pattern goes perpendicular to these lines

1 yd Ecru-White \$8.95

1 yd Charcoal-Black \$8.95

3 yds Ecru-White \$26.50

3 yds Charcoal-Black \$26.50



7 43699 90024 3



7 43699 90025 0



7 43699 93024 0



7 43699 93025 7