

How to Use PerfectFuse™ SHEER

MAKE A TEST SAMPLE

- ◆ Always make an 8"-square test sample. Does the interfacing adhere well? Does the outside of the fabric look good? Do you like the amount of body added? (Feel with all layers that will be used together.) For extra body, interfacings can be layered (fuse one on top of another). For washables, "face" the sample by stitching fashion fabric over the top, then wash as you plan to wash the garment. How did the sample launder?
- ◆ Use ecru-white when possible. It's easier to see the markings you've transferred from the pattern.

BEFORE FUSING

- ◆ **ACCURACY-** ALWAYS place your fabric wrong side up on a pressing surface. Put your pattern piece on top to check for distortion. Adjust the fabric to match the tissue. Now you are ready to fuse interfacing to your fabric.

PRESHRINKING

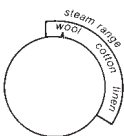
- ◆ LIGHT and SHEER interfacings do NOT need to be preshrunk. They do not even seem to shrink when steamed. However, preshrink your fashion fabric if planning to launder or presteam it if planning to dryclean the finished garment.

FUSING SURFACE

- ◆ Do not use a Teflon-coated ironing board cover. It causes shine and overheating and does not allow steam to penetrate when fusing. Cotton covers are best.
- ◆ A large surface is best for fusing. Our favorite? Make a CUT 'N' PRESS BOARD using wood covered with cotton or wool padding and then wrapped with muslin stapled to the under side. (Our books on sewing room design and on pant fitting show how to make one.)

IRON and TEMPERATURE

- ◆ A "shot-of-steam" type iron is best. You get more steam.
- ◆ Always set the iron at the wool steam setting. You may set it at a higher temperature if your fabric is heavy and can take higher heat. TEST FIRST!!

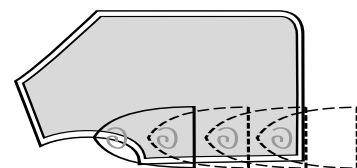
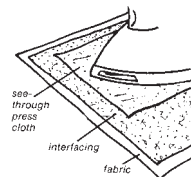


TIME

- ◆ The heavier the interfacing and the fashion fabric, the more time it will take to get a good fuse. Use continuous steam. If it is not fusing well, cover with a damp press cloth and try again. TEST FIRST!

FUSING

- ◆ Place fabric wrong side up. Press fabric to eliminate wrinkles. Place interfacing fusible (rough) side down. Smooth it in place without stretching it.
- ◆ Cover SHEER and LIGHT with a see-through cotton press cloth to protect your iron. A press cloth is optional on the rayon content interfacings (MEDIUM and TAILOR).
- ◆ Be sure to lap iron positions as you fuse. Marta calls this "zonal fusing." Fusing the entire time in one place could leave an iron imprint. Fuse by lapping iron 5-15 seconds in each spot. If iron only has holes in front of soleplate, be sure steam holes touch all areas of the interfacing. As you move the iron forward, the back of the iron will dry the fabric and continue to fuse the interfacing.
- ◆ For heavier fabrics, you may need to also fuse again from the right side. For example, if you are fusing TAILOR to a wool tweed, turn the fused fabric to the right side. Using a dry press cloth, fuse again. Some fabrics resist fusing like rainwear fabrics or those with silicon. Use a sew-in on fabrics such as velvet and seersucker.



AFTER FUSING

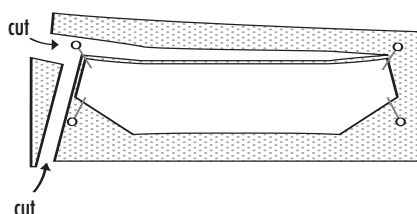
- ◆ **Add Markings:** Place pattern tissue back onto the fused fabric to mark darts, roll lines, buttonholes, and pockets. Also, you can check to see if any shrinkage occurred during fusing so you can compensate when sewing. Remark seamlines and hemlines if the fabric has shrunk.

Refer to the Palmer/Pletsch book, *Jackets for Real People*, for more how-tos.

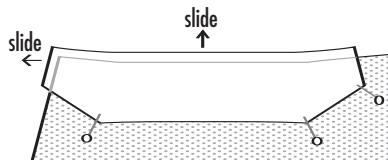
QUICK TIP: How to Cut Interfacing Smaller

than the garment piece, not to eliminate bulk, but to protect your ironing surface.

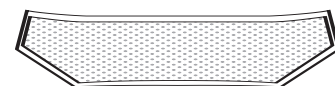
Cut the long edge first, then one of the short edges.



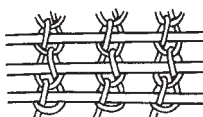
Slide the pattern piece about 5/8" up and over the long and short edges of the piece you just cut. Cut remaining sides.



Re-center the pattern to see the results. Voila! The interfacing is slightly smaller.



We love these weft interfacings with drape as well as stability. They are knits with a yarn woven into it in one direction.



© Copyright 2006 Palmer/Pletsch, Inc., USA
With the inclusion of this copyright, permission is granted to copy this information for educational purposes only.

1-800-728-3784

For more in-depth instructions, visit:
www.palmerpletsch.com