



FASHION for
Real PEOPLE

SUMMER &
EARLY FALL
2006

from
Palmer Pletsch

The Look...

WHAT'S
HOT
NOW:

Neutrals
White
Dresses
The Suit
The White Blouse
The Coat
Shorts
Skinny Pants

Summer to early Fall fashion offers something for every woman. Individuality and femininity lead the trends of the season with a more minimalist approach to dressing and toned-down approach to color, offering a softer mood. Influenced by period and retro pieces, romantic details, modern simplicity and relaxed, nautical classics, fashion is less revealing, giving way to modest lines.

Of course, touches of bohemian style and accessories still add an individual look to your fashion lifestyle.

Vogue
V8193 and
V8159



McCall's
M4841
M4872
M5056



Look for our "best bets"

McCall's
M5064



Skirts

Ultra feminine, fuller and floaty. Softly pleated or straight pencil styles.

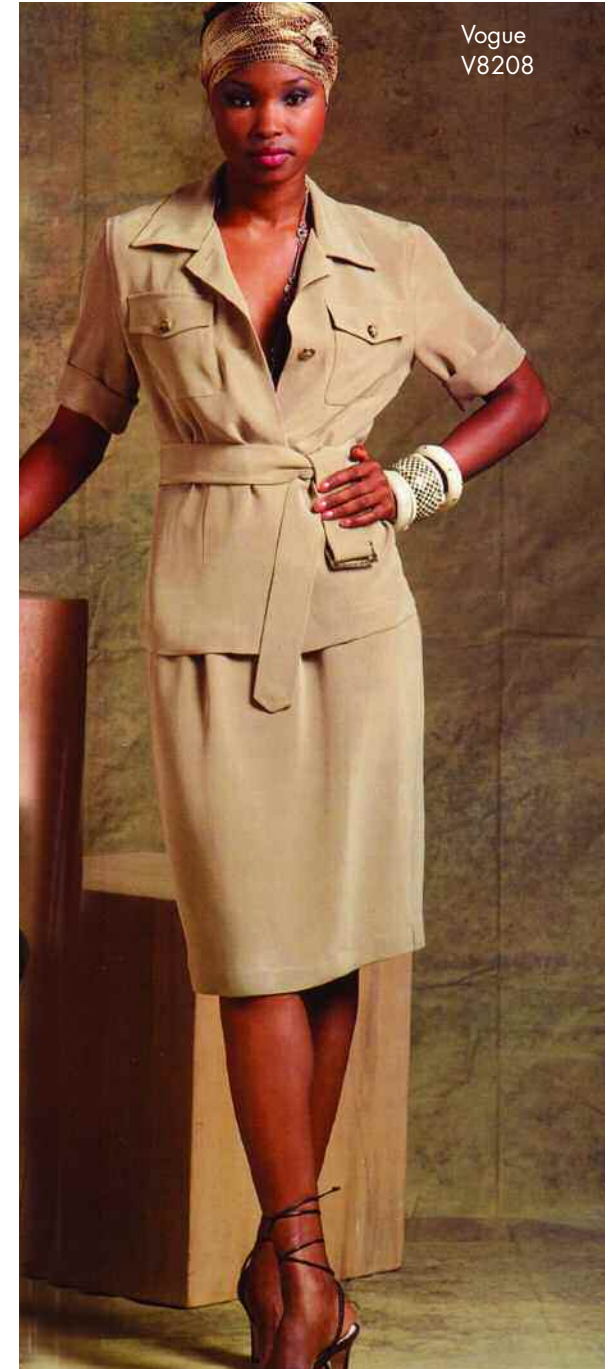
Coats

New shapes include A-line and swing toppers, the belted trench, and sporty anoraks. White coats look new.

Jackets

Fitted, short, and paired with soft, fluid trousers, feminine skirts, dresses or shorts. Look for swingy shapes, belted safari jackets, cropped jackets that are fitted or unfitted, feminine detailing, and patchwork on denim jackets. The leather jacket is a classic. Pair it with a feminine dress, ruffled blouse, white shirt, and jeans.

Vogue
V8208



McCall's
M4843

"best bets"



Suits

Modern and simple, the suit is back! Streamlined, tailored shapes look new with a soft top with feminine detailing or a shot of color. Skinny suits are the newest look. White offers the ultimate in simplicity.

Dresses

Easy and feminine dresses in styles from shirtwaists, sheaths, shifts, empire-waists, strapless, halter, and sundresses to wraps. The White Dress, with accents of embroidery, crochet, lace or ruffles is the dress of the season. Mini dresses continue in bold prints. "The little black dress" remains a workhorse in your wardrobe. As always, it is perfect for any occasion and the perfect backdrop for accessories. Statement-making dresses with voluminous skirts, trimmed with ribbons, bows and ruffles look fabulous for evening.

Vogue
V8196



Shirts and Blouses

The white shirt or blouse that is simple, tailored, unembellished, and classic, or decorated with eyelet, lace, or ruffles. Tuxedo style tops with pin tucking or ruffled fronts. Full, feminine puffed-sleeved blouses reflecting the new romantic mood. Look for a variety of soft and feminine tops, in solids or prints to continue from day to evening. They will look fashion forward worn with



skinny pants, Bermuda length shorts, and short-shorts.

McCall's
M5113



McCall's
M4843





Vogue
V2897

Pants

Skinny pants, cut just above the ankle look new with flat shoes or chunky heels. Wear them with an oversized top. Full legged, fluid trousers look in proportion with a smaller, fitted top or jacket. Cropped pants or gaucho styles continue. Watch the return of leggings.



McCall's
M4093



Vogue
V8203

Vogue
V8201



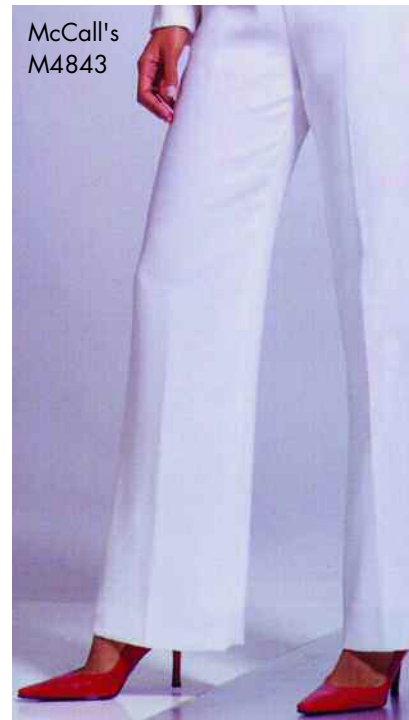
McCall's
M5063

Shorts

Shorts come in all lengths, from knee-length Bermudas to short shorts, the look are sophisticated enough to pair with a jacket and high heels, pretty flats or sandals.



Vogue
V8208



McCall's
M4843

“best bets”



Vogue
V8203

Vogue
V8201

The blue color family - navy, cobalt blue, sapphire and indigo look fresh worn with black or white while the softer aquamarine and sky blues look new combined with clove brown. Combine blue with green for a fresh spa feeling.



McCall's
M5064

D

the colors

The new direction in color is calmer and more muted. Influenced by the beach, desert and organic materials, color combinations are softened with more integration of neutral color.

Make a statement this season with natural, earthy colors in separates and accessories.



Yellow, from vanilla to golden saffron, brings natural warmth while gold metallic adds the glow to summer. Warm orange and melon are wonderful combined with a neutral color.



Red is a great color for accessories with your new nautical separates.

Black & white look new combined with blue, neutrals or accented with soft brights



the colors

McCall's
M4093



The new neutrals – soft sand, beige, wheat, khaki, tan, cinnamon, clove brown, and soft grays are the key colors of the season. Freshen up last year's look by mixing in neutral separates and accessories with black, white, or the new soft brights.

Vogue
V2895



McCall's
M4842



Green is one of the season's best new shades. Soft kiwi, jungle green, moss, seafoam, meadow and hunter bring freshness and the calm feeling of nature to your wardrobe.

McCall's
M4396



McCall's
M4877



McCall's
M5137

Pink, peach, lavender and viola add femininity to your summer wardrobe.

Skin toned nudes and flesh toned, soft peach are the sexy new hues for evening, especially when they are layered or trimmed with black lace.

the fabrics



McCall's
M5064



McCall's
M5064

*linen, linen blends, silk,
washed silks, crinkled textures.
denim, cotton, cotton blends,
cotton twill, cotton voile,
eyelet, seersucker, rayon,
lace, tablecloth lace, crochet.
leather, satin, chiffon, ethereal
textures, organza, metallics*



Vogue
V8159



Vogue
V8196



McCall's
M4785

McCall's M5148



THE DETAILS

beading,
ruffles,
pin tucking,
embroidery,
Lace trim,
sequins,
crochet,
smocking
and
ruching.

Patchwork is
enjoying
resurgence!



McCall's
M5054



McCall's
M5138

THE PRINTS

Op-Art and
Graphic Patterns

Polka Dots

Gingham Checks

Army Camouflage

Botanical and
Floral Prints

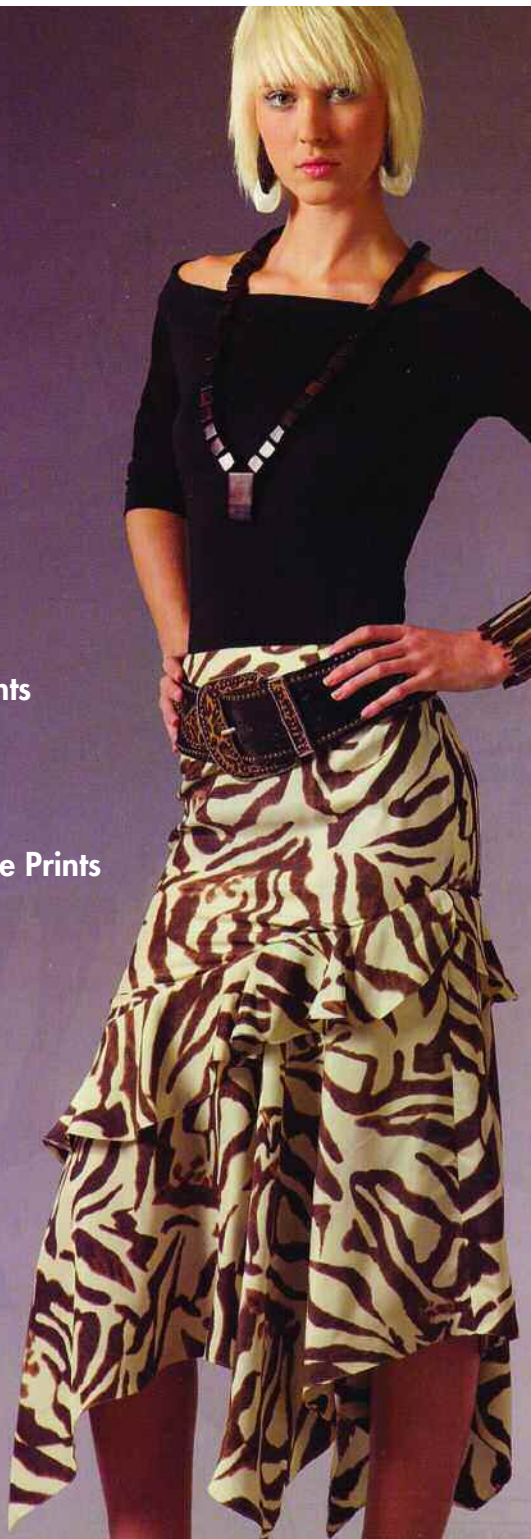
Jungle Prints

Ethnic-inspired Prints

Jacquard Prints

Nautical Stripes

Fruit and Vegetable Prints

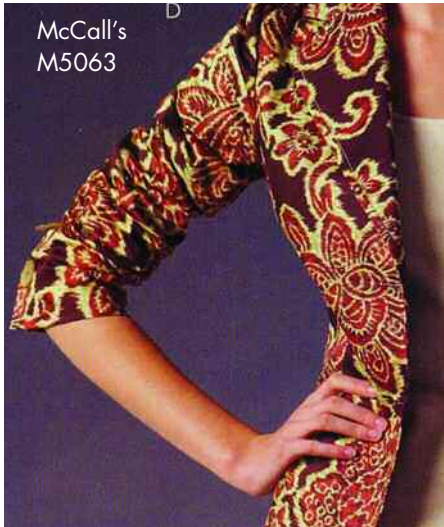


McCall's
M5055

McCall's
M5050



McCall's
M5063



McCall's
M4841
M4872
M5056



McCall's
M4878



the accessories

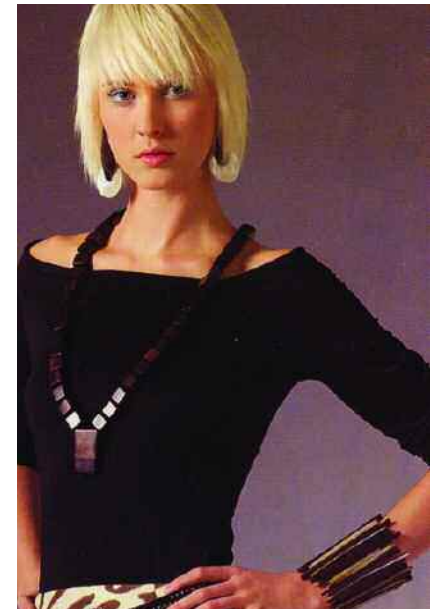
The news is in accessories. It's all about updating with the right belt, shoe, and bag. You won't see as much jewelry worn at the same time as you have seen in previous seasons. You will notice a cleaner, toned-down look. This season, wear bracelets, necklaces, or earrings but not all at the same time. Add personality to your look by adding a shoe or handbag in a great color or make a statement with natural, earthy colors in accessories.



Jewelry

Gold chandelier and drop earrings, hoop earrings, chunky, bangle bracelets, or multi-length necklaces are a great compliment to the white, tan, and nautical styles of spring. Silver adds cool sophistication to sand and sea blues and greens.

Wood and natural stone pieces are perfect with the new neutrals or add the neutral jewelry to any bright color for a new look. Colored crystal earrings, necklaces, or bracelets add a romantic, feminine flare. Add a new bold-sized watch to your accessory wardrobe.



“MUST HAVE” ACCESSORIES

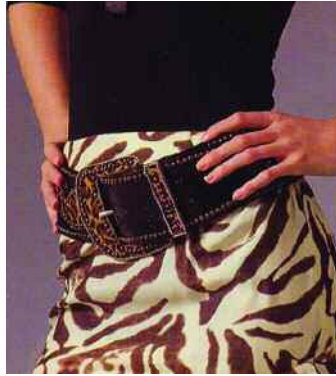
Wide Belts
Big Bags
Chunky
Shoes
Oversize
Sunglasses



the accessories

Belts

The wide belt updates any look this season. Wear it tight at the waist or slung low over skinny pants, jeans, or a skirt. Look for rope belts, woven leather, natural straw, and ornate detailing.



Handbags

Choose white, a natural-colored fabric or leather, woven leathers, or a great color. Bags with a western flare, colored crocodile, or luxe metallic bags.



Shoes

Chunky shoes – platforms, wedge heels, and stacked heels top the list of shoe "Must Haves." Pretty flats look wonderful with the new skinny pants. Look for open toed pumps and flats, patent leather platform pumps, and sling backs with your new suit.

Spice up the season's pale color palette with great colored, bejeweled, beaded, or metallic sandals. And...don't forget those cowboy boots to wear with boot-cut jeans!

